

Disposable Bubbler Comb



USER GUIDE



ANIMAL REPRODUCTION SYSTEMS



14395 Ramona Ave. Chino, CA 91710

www.arssales.com ♦ sales@arssales.com ♦ TEL: (800) 300-5143 ♦ FAX: (909) 597-3043

©2006 DUPREE, INC

BC-101-UG A



Part No. BC-101/25

Introduction

The ARS Disposable Bubbler Comb is designed to quickly and easily insert an airspace into 0.5 ml semen freezing straws before sealing with sealing powder. This airspace is necessary in order to provide ample room for the liquid inside the straw to expand during the freezing process. Detailed instructions for the preparation and freezing of stallion semen can be found starting on page 99 of the book *Techniques for Collection, Evaluation and Insemination of Stallion Semen, 3rd Edition* which is available from ARS (P/N 537-342C).

Instructions For Use

The following instructions show the steps necessary to use the ARS Bubbler Comb to insert an airspace into 0.5 ml freezing straws.

1. Attach the ARS Bubbler Comb onto the top of a standard 50 ml conical centrifuge tube by depressing the sides of the tube and insert the Bubbler Comb into the tube (see Figure 1).
2. Once released, the Bubbler Comb will have a snug fit in the centrifuge tube (see Figure 2).
3. Place the centrifuge tube into a rack to hold it upright during use (see Figure 3).
4. As straws are filled they should be placed onto the prongs of the ARS Bubbler Comb (see Figure 4).
5. Push down on the straws until they are flush with the base of the Bubbler Comb (see Figure 5). This will create a defined air space.
6. Repeat until the Bubbler Comb has been filled (see Figure 6).
7. Once the Bubbler Comb has been filled, remove straws and tamp sealing powder into airspace until plug is approximately 1/4 inch inside the straw (see Figure 7). There should be a small bubble of air remaining inside the straw (see Figure 8).
8. Dip straw in water to seal the plug. Gently shake straw to get the bubble near the center of the straw (see Figure 9).
9. Repeat steps 5 through 8 until all straws have been sealed.
10. Once the supply of extended semen has been exhausted, semen drained from the Bubbler Comb (See Figure 10) can be used to fill additional straws. Simply remove the Bubbler Comb and place it on a different centrifuge tube and repeat steps 1 through 9.
11. Discard Bubbler Comb once all straws have been sealed. It is recommended that a new Bubbler Comb be used for each collection.



Figure 1. Insert Bubbler Comb into centrifuge tube (P/N 537-742/25).



Figure 2. Bubbler Comb should fit snugly inside tube.



Figure 3. Place centrifuge tube in a rack. The E-Z Freezin® Packet Stand (P/N EZF-PS) is shown here.



Figure 4. Align filled straws (P/N 537-670-CLE) with guides on the ARS Bubbler Comb.

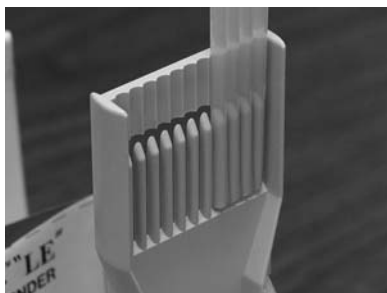


Figure 5. Push down on straws until they are flush with the base.



Figure 6. Repeat until the ARS Bubbler Comb has been filled.



Figure 7. Seal straws with sealing powder (P/N 537-671).

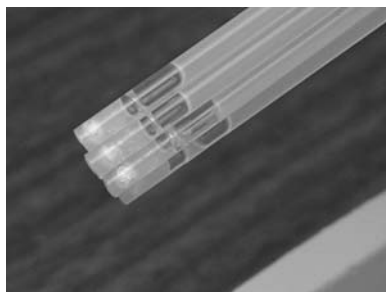


Figure 8. After sealing, a small air bubble should remain in the straw.



Figure 9. Gently shake straws until air bubble is in the center of the straw.



Figure 10. Drainage in tube with bubbler comb can be used to fill additional straws.

LIMITED LIABILITY STATEMENT

DUPREE, INC., a corporation ("SELLER" or "DUPREE"), warrants to the original purchaser only that the products sold by its Animal Reproduction Systems Division shall be free from defects in material and/or workmanship WHEN DELIVERED BUT NOT THEREAFTER. The purchaser must examine such products immediately upon receipt thereof and determine whether the same conform to the description thereof as set forth in the product data sheet accompanying this Limited Warranty Statement. If any such product does not conform to any of the data sheet descriptive criteria provided by SELLER with this statement, or if any such product appears to be defective in any respect, such product shall be immediately returned to SELLER for replacement and/or repairs as appropriate to the product. Such inspection and return of any allegedly defective product shall be made within five (5) days from the date of delivery thereof to the original purchaser and, if not so returned, this WARRANTY shall be void and of no effect whatsoever. Any allegedly defective product returned for repair or replacement within said five day period will be repaired or replaced and reshipped to the original purchaser within ten (10) days after return of the defective product to SELLER.

The restrictive and limited nature of SELLER'S warranty obligations as herein set forth is required by reason of the character of the products and the circumstances and conditions under which the same are likely to be used. The warranty obligations of SELLER shall be limited to repair or replacement of

any allegedly defective product as set forth above and DUPREE shall not be liable or responsible under any circumstances or in any amount for incidental or consequential damages or for injury or damage to persons or property using or used in connection with any of such products, whether or not defective, or for loss of profits or other costs, expenses or charges of any kind whatsoever. SELLER'S warranty obligations as set forth above shall be absolutely void if the allegedly defective product is not returned to seller within the five day inspection period set forth above, or if the product is misused, neglected or damaged, or if the instructions for its use as set forth in the accompanying data sheet have not been strictly followed, or if anyone other than SELLER has made any attempt whatsoever to repair or to alter the product in any respect.

There are no warranties or representations by SELLER other than as set forth herein, either express or implied, as to any of the products or the origin thereof or any other matter relating thereto, and no person, firm or corporation is authorized to make any representation or to incur any obligation in the name or on the behalf of DUPREE, contrary to any of the provisions or conditions of this statement.

EXCEPT TO THE EXTENT EXPRESSLY PROHIBITED BY APPLICABLE LAW, THE FOREGOING LIMITED WARRANTY IS IN LIEU OF ANY AND ALL OTHER WARRANTIES, EXPRESS OR IMPLIED, INCLUDING BUT NOT LIMITED TO ANY WARRANTIES OF FITNESS OR MERCHANTABILITY.